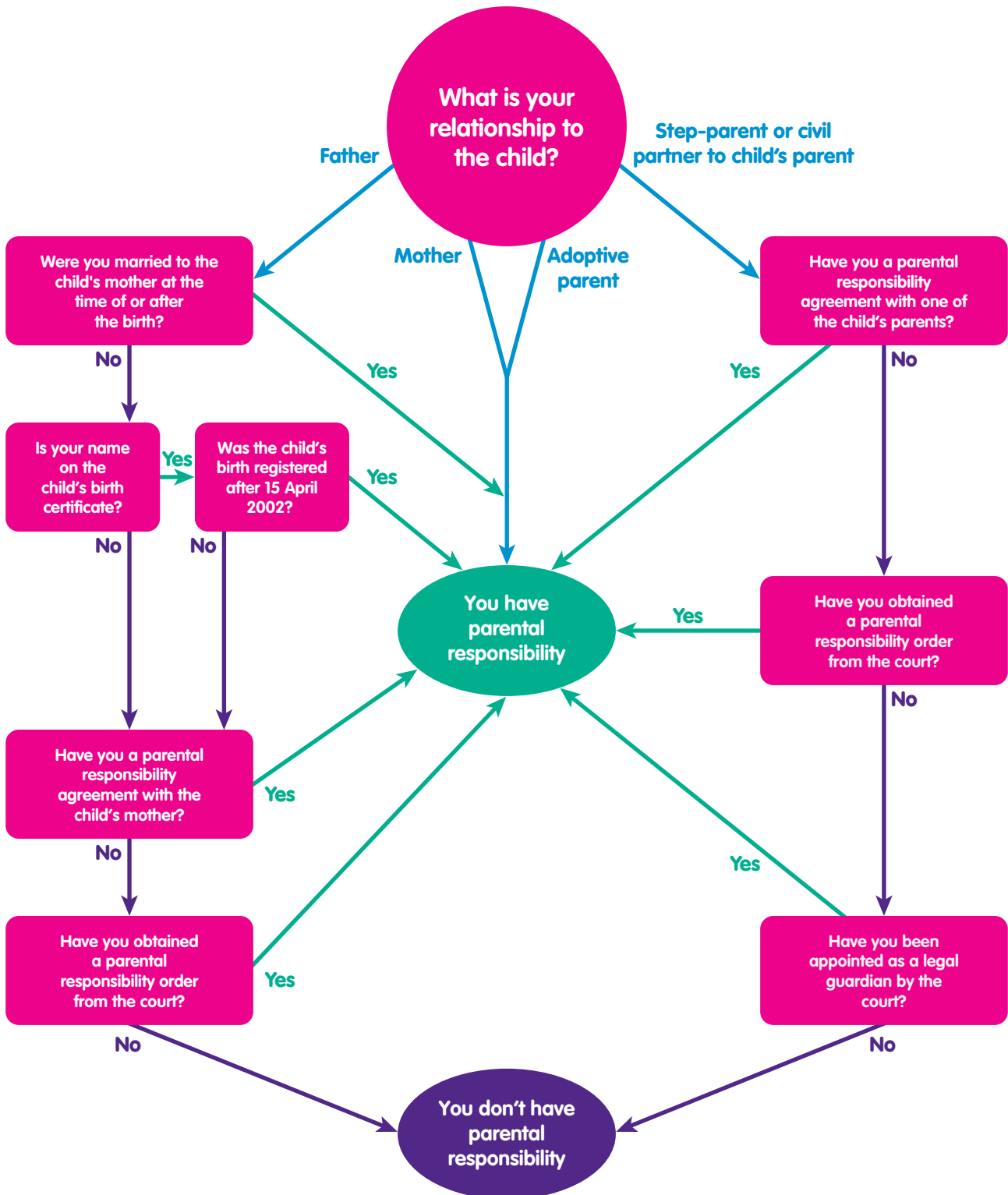


Parental responsibility flowchart – Northern Ireland

This flowchart highlights situations where a father may not have automatic parental responsibility if his unmarried partner dies. In these cases, you might want to advise that the mother grants parental rights to the father in case anything happens to her.

The chart assumes that the parent has not legally lost parental responsibility, and doesn't give details of parental responsibility rights for carers.



Bright Grey
2 Queen Street
Edinburgh
EH2 1BG

 **0845 6094 500** |  **help@brightgrey.com** |  **www.brightadviser.co.uk**

A part of
**ROYAL
LONDON**
FINANCIAL SENSE

Bright Grey. More financial sense from Royal London.
We are backed by the financial strength and stability that comes from being part of the Royal London Group, the UK's largest mutual life and pensions company.

Bright Grey is a division of the Royal London Group which consists of The Royal London Mutual Insurance Society Ltd and its subsidiaries. The Royal London Mutual Insurance Society Ltd provides life and pension products, is a member of the Association of British Insurers, is authorised and regulated by the Financial Services Authority No.117672 and is registered in England and Wales No.99064. The registered office is 55 Gracechurch Street, London, EC3V 0RL. Bright Grey is a member of IFA Promotion Ltd.

PC1776A.0711